



PROactiv'
Precision digestive security



Laying hens



Turkey



All poultry

PROACTIV' POULTRY

Contributes to a good digestive balance and encourages full exploitation of the nutrients in the ration.

Why use PROACTIV' POULTRY?

Inspired by and respectful of poultry physiology, ProActiv' solutions contribute to a good digestive balance and improve production performance.

ProActiv'® Poultry is formulated from a complex of carefully selected, active phyto-solutions that have a proven synergistic effect on the integrity and balance of the digestive tract of birds.

The result: better laying performance and improved animal comfort in laying and breeding animals.



ProActiv'® Poultry contributes to digestive balance.

Benefits



Contributes to digestive comfort



Improves zootechnical performance



Helps improve litter quality



25 kg bag
Powder

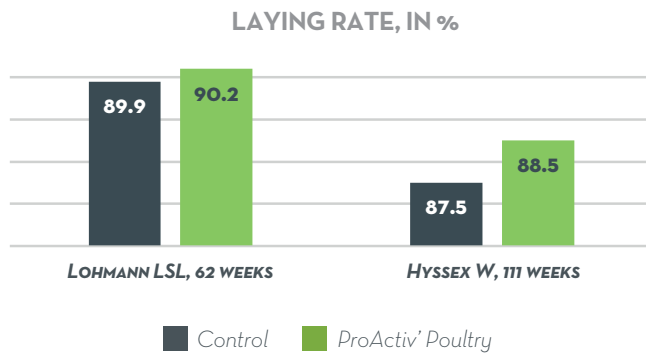
Composition elements

A blend of plant-based products and an organic acid complex.

PROACTIV' POULTRY

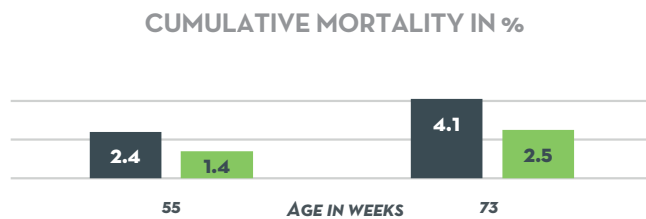
Supporting evidence

Improved laying performance with ProActiv' Poultry.



Customer trial, Europe 2020-2021. 59,200 Lohmann LSL hens with distribution of ProActiv' Poultry for 2 weeks and 94,350 Hyssex W laying hens and a distribution over 4 weeks.

ProActiv' Poultry helps to enhance viability.



Customer trial, Ecuador 2020. 480,000 Hy-line Brown laying hens. ProActiv' Poultry is distributed on top and the results are compared to the Hy-line Brown reference.

Positive feedback from the field with ProActiv' Poultry

"IN ALL THE BUILDINGS, LESS DRY DROPPINGS AND THEREFORE FEWER DIRTY EGGS WERE OBSERVED"

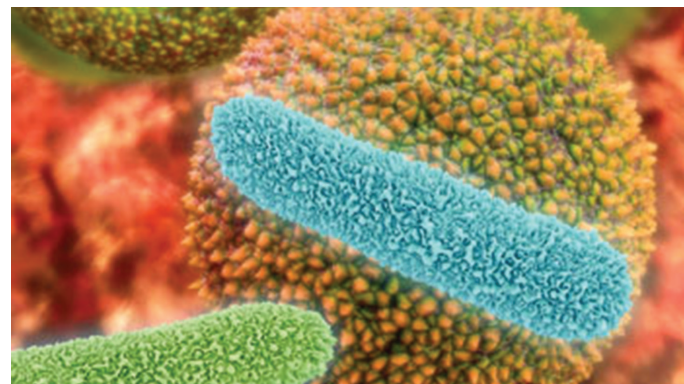
Ecuadorian customer feedback, 2020.

Did you know?

- The intestinal flora is an important organ in the body. Often called the "second brain", the intestinal flora is made up of ten times more bacteria than the number of cells in the body.
- In effect, gut health is the key to a healthy animal and good performance. When the integrity of the digestive system is disturbed, diarrhoea, high mortality, deteriorated technical-economic results, threats from disease and the use of antibiotics are very often observed.
- Good digestive health is the result of a dynamic balance between the mucous membrane, intestinal microflora and feed. We now understand better the need to secure feed by characterising and selecting raw materials and adding nutritional solutions that contribute to a good digestive balance.

Recommendations for use

Continuous incorporation into the feed. Can be used alone or in a programme with other solutions (ProActiv' Complex®, Feedstim® Poultry, Oleostat®).



Plant-based products can help inhibit the development of bacteria.